

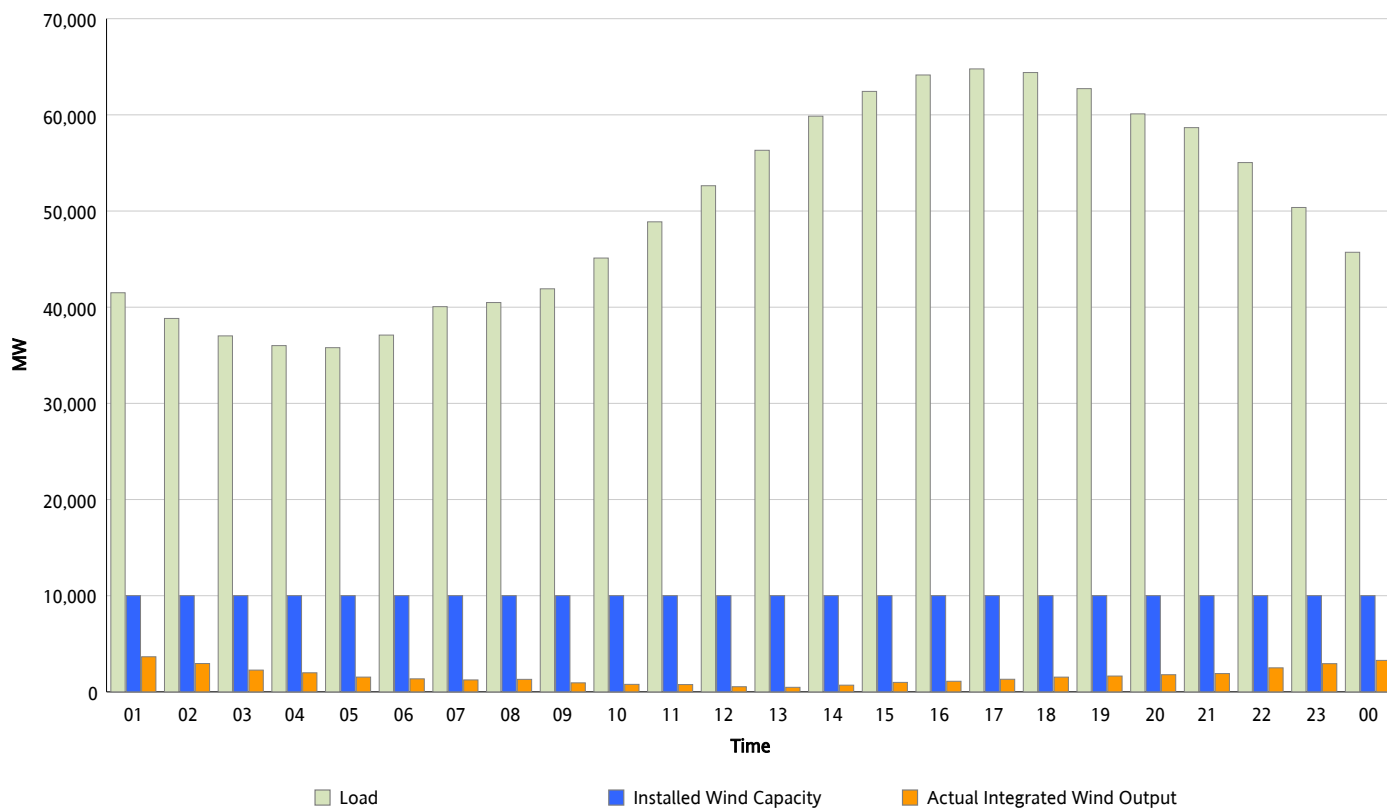


ERCOT Grid Operations

Wind Integration Report : 09/06/2012

| | |
|----------------------|-----------|
| Peak Load | 64,778 MW |
| Load Peak Hour (HE) | 17 |
| Wind Over Peak | 1,312 MW |
| Wind Record 06/19/12 | 8,368 MW |
| Max Wind Value* | 3,822 MW |
| Wind Peak Time | 00:27 |
| Wind Integration % | 9.22 % |

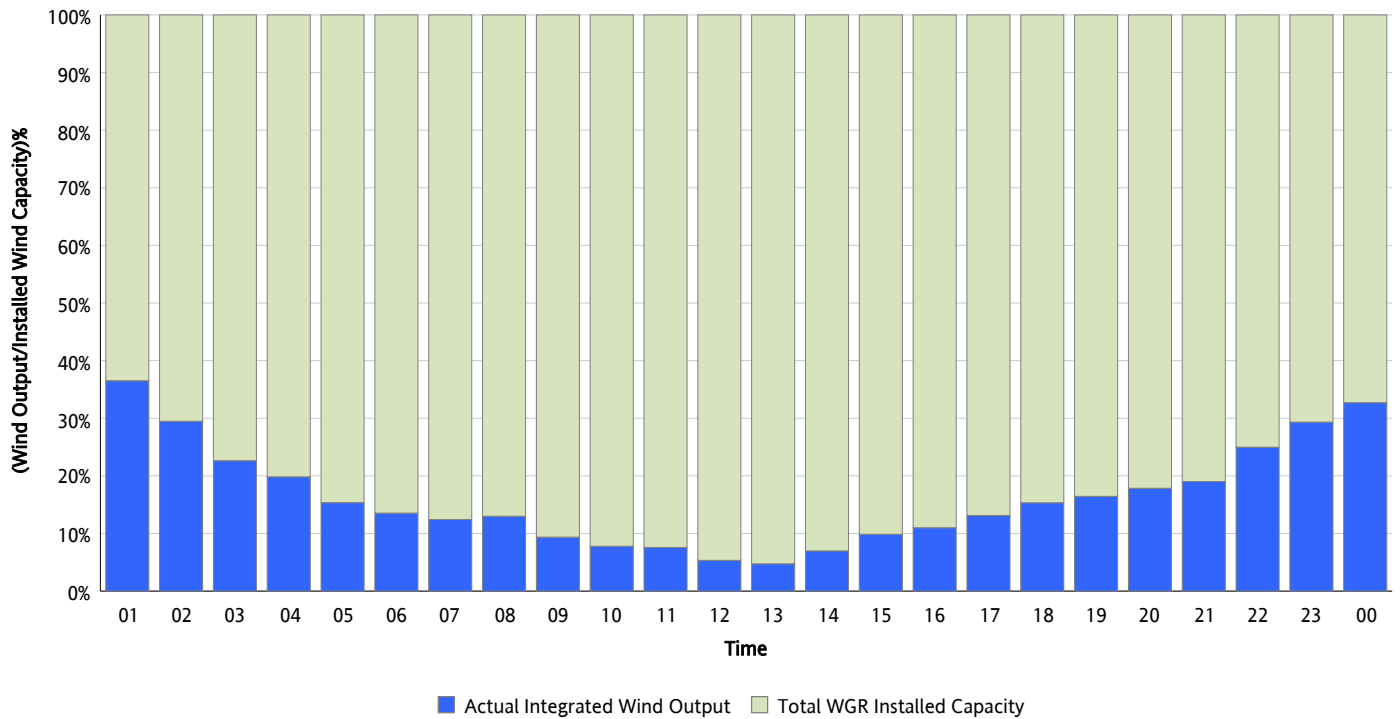
Hourly Average Actual Load vs. Actual Wind Output
09/06/2012



** Wind Record and Wind Max represent instantaneous values and the rest of the values are integrated over the hour*

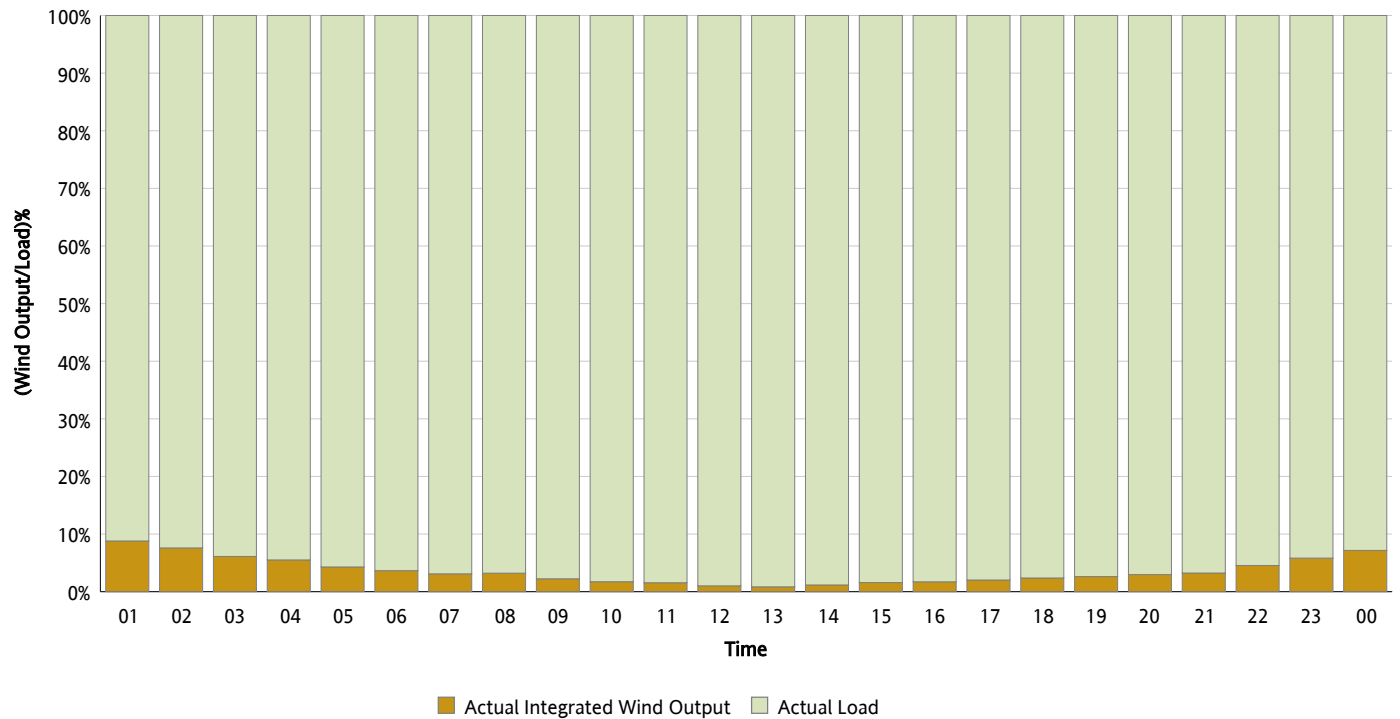
Actual Wind Output as a Percentage of the Total Installed Wind Capacity

09/06/2012



Actual Wind Output as a Percentage of the ERCOT Load

09/06/2012



ERCOT Load vs. Actual Wind Output

08/30/2012 - 09/06/2012

